

COUNTRY CANDLE™

The Original Kittredge Family Recipe



The Fragrances You Love - The Quality You Remember

www.countrycandle.com • 888-957-4645

COUNTRY CANDLE™

THE ORIGINAL KITTREDGE RECIPE

Hello, I'm Mick Kittredge III, President of the Kringle Candle Company. My family has been in the candle business for over 40 years. You may remember my father, Michael Kittredge II, the founder of the Yankee Candle Company. His passion for fragrance and quality transformed a small basement startup into a highly successful business that became the candle industry model. Many specialty retailers would say "things just aren't the same" or "the candles just don't smell the same anymore." We realized there was a void in the core candle market and this compelled us to begin crafting scented candles once more. Since 2009, we have been the leading manufacturer of our all-white, exquisitely scented Kringle Candle brand. We are continuing to grow to meet our consumer and wholesale needs, and it is my proud honor to introduce you to our all new **COUNTRY CANDLE™**, an exclusive Kittredge Family candle line.

COUNTRY CANDLE™ is made in the USA incorporating American ingredients and handcrafted from start to finish in Bernardston, MA. This line offers your customers a highly-scented colored candle "the way it used to be." Our commitment to quality, superior fragrance and attention to detail is unequalled. Only the highest quality fragrances make it into our lineup with a fragrance level concentration 27-50% higher than our competition.

COUNTRY CANDLE™ offers:

- Original Kittredge Family recipes of yesterday and today
- Over 50 unique fragrances
- The highest quality fragrances
- More fragrance oil per candle
- Clean burning
- 100% American-made
- Commitment to quality, trends & design
- Competitive pricing for your customers
- The best scented candle money can buy

As a family-owned business, we are so excited to bring you our new **COUNTRY CANDLE™**. My passion and love for this craft is what drives me to create the world's best scented candles. We emphasize quality above all else. It truly is "The way it used to be."

Mick Kittredge III

President & CEO

Kringle Candle Company & Country Candle

2017 COUNTRY CANDLE™ Ordering

Regular Terms & Conditions:

Opening Order Minimum: \$350

Reorder Minimum \$250

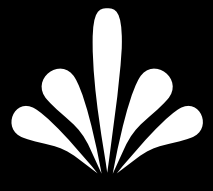
Reorder Incentive:

60 Days after last invoice/\$250 Minimum Order receives a 50% Freight Allowance.





The Original Kittredge Family Recipe



COUNTRY CANDLE™

*The Fragrances You Love
The Quality You
Remember*

COUNTRY CANDLE™

MADE IN

A M E R I C A

At Country Candle, we help create and preserve jobs all over the United States and North America. All of our candles with the Kittredge family recipe fragrances are truly Made in America - proudly poured right here in Western Massachusetts.

Our best selling jars are molded in Ohio, the wicks that create the flame are woven/braided in New Jersey, the wax that fills them is pumped and refined in North America, and the authentic fragrance oils that set Country Candle apart from the crowd are formulated in New Jersey, Florida and other parts of the USA.

Country Candle's unique scents are often based on customer suggestions, and scent labels (designed by our creative team) are printed locally in Massachusetts. From designers to lab testers to production people to packagers, office teams, warehouse staff, truck drivers and more, countless jobs are tied to making and delivering these components. Our team of chandlers puts these domestically-created parts together with pride and precision - bringing you the best candle products - second to none.



COUNTRY CANDLE™



COTTON FRESH

Powdery clean, fresh & crisp, like the feeling of slipping on cotton clothing or into new bed sheets!



TROPICAL WATERS

A colorful collage of exotic fruits carries you to tropical islands.



COCONUT COLADA

It's Piña Colada but with coconut shaken just right!



PEACH BELLINI

This refreshing cocktail creation is just the right mix of effervescence and perfect peaches.



LIFE'S A BEACH

The essence of this happy scent is fun in the sun, sand and surf.



GREY

Grey brings a confident blend of citrus, florals, exotic woods and musk. Undertones of vanilla and Tonka bean provide an elegant base.

COUNTRY CANDLE™



COUNTRY LOVE

Country love, country life...slow down and enjoy the simple pleasures and treasures of friendships, family, iced tea and porches.



LEMON LAVENDER

Two powerhouse scents that play well together. Bright, luscious lemon meets lavish lavender.



FRESH LILAC

A soft, magical floral recalling the very essence of springtime, our delicate Fresh Lilac is simple, pure and honest.



LOVE & ROSES

Say "I love you" with this sensual scent in romantic red.



SUNSHINE & DAISIES

Enjoy the nature of the happiest of flowers. Daisies bring sunshine and bright bold colors to our everyday lives.



VANILLA ORCHID

You'll have that bakery smell throughout as we've extracted a true vanilla aroma from this fruitful flower.

COUNTRY CANDLE™



COUNTRY LAVENDER

Discover the idyll of Provence's purple meadows in our calming Country Lavender, sure to help take you away from the stresses of the day.



CHERRY BLOSSOM

Our Cherry Blossom is a lively and authentic botanical fragrance, celebrating the renewal of spring with a promise of luscious tart/sweet fruits to come.



BLOOMING PLUMERIA

Enticing with a fruit essence, plumeria is a unique exotic floral.



COUNTRY CANDLE™



LEMON RIND

The very essence of clean, bright and delightfully-biting, Lemon Rind is a stunningly-accurate natural citrus scent.



HONEYDEW

Honeydew will fill your rooms with a sweet, succulent fruit aroma that's truly like no other.



SAGE & CEDAR

Soothing savory sage pairs perfectly with cedar reminiscent of holidays and Thanksgiving dinners.



MEDITERRANEAN FIG

An amazing milky sweetness and natural woody aroma, this sweet fig fruit is decadent.



LEMON LAVENDER

Two powerhouse scents that play well together. Bright, luscious lemon meets lavish lavender.



WILD BERRY BALSAMIC

A unique infusion of wonderful wild berries produces a fragrance that is bold and delightful.

COUNTRY CANDLE™



CITRUS & SAGE

Citrus and Sage's tangy, bright citrus accords partner with green herbal notes to produce a relaxing yet uplifting union.



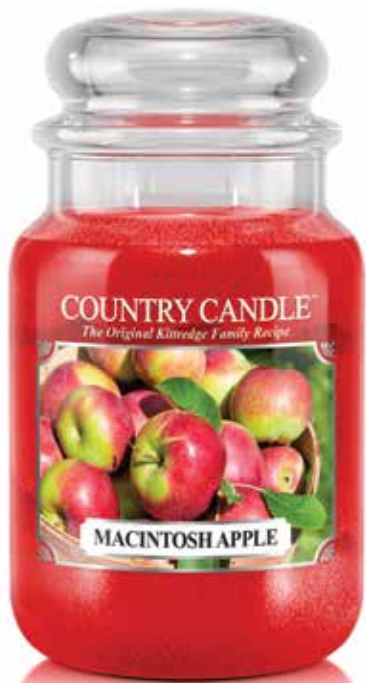
PINE & POMELO

Wonderfully woody with a citrusy sweet surprise.



CILANTRO, APPLE & LIME

The exotic flavor of cilantro with apple and a spritz of lime bring texture and depth to this citrusy herbal scent.



MACINTOSH APPLE

We picked this variety and produced a crisp, tart flavor that honors this most popular apple.



GRAPEFRUIT GINGER

The classic tang and sweet sass of grapefruit flavored with ginger for a distinctive spicy aroma.



PEACH BELLINI

This refreshing cocktail creation is just the right mix of effervescence and perfect peaches.

COUNTRY CANDLE™



VANILLA CUPCAKE

So light yet creamy with wafts of vanilla goodness; exactly like a vanilla cupcake.



SMOKE & S'MORES

Let's face it, this gooey marshmallow, chocolate graham cracker treat is spot on. You'll want s'more.



CHOCOLATE CHIP COOKIE

Hot from the oven, when they're just about ready, that warm comforting aroma fills the air with doughy, chocolate morsel goodness.



PINOT NOIR

Light with sweet berry notes, this perfect Pinot Noir is rousing romantic!



SALTED CARAMEL APPLES

Your favorite crisp apple dipped into creamy salted caramel sauce for a deliciously smooth scent!



SPICED APPLE CHAI-DER

Best blends of crisp apples pressed to perfection and just the right amount of mulling and classic chai spices and cream.

COUNTRY CANDLE™



CINNAMON SPICE

A prized sweet scent with an exotic pungent kick that only cinnamon spice can offer.



COFFEE SHOP

It's that great wonderful aroma of roasting beans and freshly brewed coffee.



BLUEBERRY MUFFIN

Baked blueberries yield a luscious, fruity scent totally different than the fresh fruit. It's matched perfectly with a warm cake note.



COUNTRY CANDLE™



AUTUMN HARVEST

Fall harvest yields the essence of apple, citrus, pine, herbs & spices to capture this bountiful time of year!



GOLDEN AUTUMN

The comforting orange and peachy landscape against a fall sky reminds us to enjoy the season.



PUMPKIN HARVEST

Picked the perfect pumpkins for an earthy sweet buttery nut scent.



SALTED CARAMEL APPLES

Your favorite crisp apple dipped into creamy salted caramel sauce for a deliciously smooth scent!



WARM APPLE PIE

Mouth-watering aroma with sweet apples, butter and spices straight from the oven...à La Mode!



APPLE & TEAKWOOD

Perfect balance uniting top apple flavors with teakwood for an exceptional solid scent.

COUNTRY CANDLE™



LEAVES

Light citrus fresh notes, gentle florals and traces of musk unite to create the ultimate warm cocooning fragrance.



PUMPKIN CIDER DONUT

Our Pumpkin Cider Donut is infused with sweet cider notes and plentiful pumpkin!



FLANNEL

Extra soft, extra sweet with floral and musk, this is our favorite flannel.



HOT CHOCOLATE

Our Hot Chocolate is deep, rich and filled with true cocoa goodness - perfect for warming your winter!



WELCOME HOME

Friendly spices, a touch of baking bread & warm hearth-side aromas evoke reassurances of homecoming & sanctuary found.



HARVEST MOON

Rich notes of plum and sweetness shine on through Harvest Moon.

COUNTRY CANDLE™



MOUNTAIN SUNRISE

Magical and exhilarating scent of woody pines, dewy florals and luminous snow.



CHEERS

The very best of wishes...this lively scent beckons us to celebrate life wherever it leads us. Here's to you.



SNOWFLAKES GLISTENING

Sparkling citrus, floral & honey swirl in crystal harmony to create a twinkling vista.



SILVER BELLS

In the city or the country, this bright, happy fragrance rings true year-round.



MERRY CHRISTMAS

Cozy evergreen forests of pine, firs, spruce & cedars make up the landscape of this rich, robust and spirited scent.



JINGLE ALL THE WAY

Resplendent with the sweet fruit and bright citrus accords, merrily balanced by warming spices and wood notes.

COUNTRY CANDLE™



COZY CABIN

Brown sugar, vanilla bean and warm cinnamon accords embrace rich wood notes as a smoky inkling adds the perfect finish.



FIRESIDE

Kindle the fires with subtle smokiness tinged with citrusy sweetness and enjoy sitting fireside.



PEPPERMINT TWIST

Those classic red and white swirled candies have always created a frosty mint sensation. Peppermint Twist fills the air with that same fresh goodness.



FROSTED CRANBERRIES

A festive treat that is crisp and tart with a sweet surprise.



BALSAM & CEDAR

Beautiful balsam and earthy cedar combine for a relaxing, fresh woodlands aroma perfect year round.



HOME FOR CHRISTMAS

Warm clove-accented top notes, fresh pine base notes and touches of spice and floral artfully brought together.

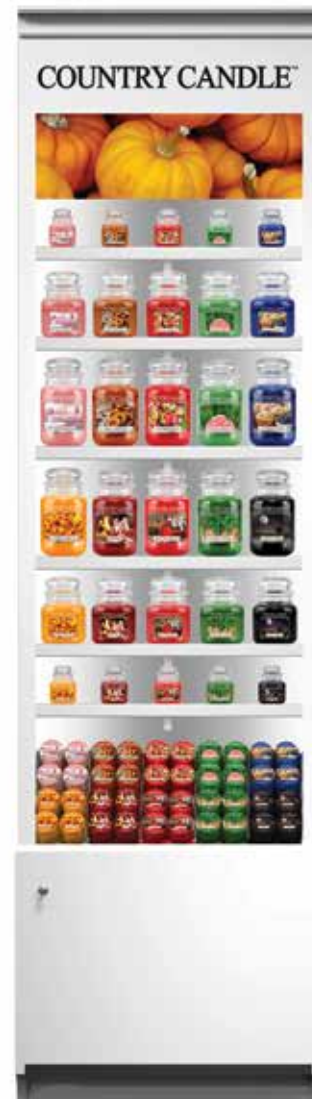


4-Foot Hutch

Two extra feet can make a big difference!
With 51.5" of wall space, this hutch:

- Showcases 20 fragrances
- Includes 6 straight shelves & 1 slanted acrylic shelf for DayLights®.
- LED lighting
- 51.5"W x 16.5"D x 86"H

For quick restock, this hutch also offers a 2-door bottom cabinet for space and storage.



2-Foot Hutch

Just over 2 feet (27.75") of wall space shows customer favorites in all the key formats!

Did we hear someone say "efficient?"

This hutch:

- Shows up to 10 fragrances
- Includes 6 straight shelves, with 1 slanted acrylic shelf at the bottom for DayLights!
- 27.75"W x 16.5"D x 86"H

A great Country Candle statement doesn't

Countertop DayLight® Spinner Display

Country Candle's most innovative new candle style is the small-in-size but mighty-in-fragrance DayLight®. Now we offer resellers the ultimate DayLight® profit center with this countertop unit with swivel base. Totally browsable and sure to trigger impulse buys, it's the perfect sales-generating companion piece to our standard hutch.

- Conveniently displays (18) 12-packs of DayLights
- Swivel base
- 19"W x 24"H



COUNTRY CANDLE™ Full Modular Display & Stacking Tables

Looking to highlight a special Country Candle fragrance for your customers? Two stacking display tables can feature fragrances of the month, seasonal products or events to complete the optimal retail merchandising presentation.

- Conveniently highlights seasonal candles or specials
- Lg Table 32"W x 20"D x 30"H
- Sm Table 24"W x 16"D x 24"H



**Pictured above: (2) 4-foot hutches with a 2-foot modular corner unit (28.5"W x 31.25"D x 86"H) & stacking tables. Corner unit comes with LED lighting and 5 glass shelves.*

PRODUCT

EXPERIENCE

slipping into new cotton sheets, ...tropical coladas...fun in the sun...saying "I love you"
with romantic reds...bringing sunshine to a friend...fruity decadence...crisp cool
days of autumn...balsam and berries...s'mores...sharing a freshly brewed
cup...holiday festivities...frosty treats...woody winter wonders...
and cozy nights with over 50 Country Candle fragrances of
yesterday and today.



2-Wick Large Jar
23oz - 100 to 150hrs
Dimensions: 4" x 6.6"



2-Wick Medium Jar
16oz - 65 to 75 hrs
Dimensions: 4" x 5"

KNOWLEDGE

COUNTRY CANDLE JARS

Large 2-wick

Our Country largest jar, 23oz with two wicks for a fast melt, bigger wax pool and perfect for larger-size rooms and for every occasion. Colored wax, easy-peel label, reusable & recyclable. Clean, long burning (100 to 150 hours) with lead-free cotton wicks. Highly fragrant lasting the life of the candle.

Medium 2-wick

Our Country medium jar, 16oz with two wicks for a fast melt, big wax pool and perfect for small to mid-size rooms and every occasion. Colored wax, easy-peel label, reusable & recyclable. Clean, long burning (65 to 90 hours) with lead-free cotton wicks. Highly fragrant lasting the life of the candle.

Mini single wick

Our Country mini jar, 3.7oz with a single wick for a perfect melt and even liquid wax pool. Colored wax, easy-peel label, reusable & recyclable. Clean burning (up to 20-30 hours) with lead-free cotton wicks in a perfect compact size for sampling scents. Highly fragrant lasting the life of the candle.

COUNTRY CANDLE DAYLIGHTS

Single DayLight

DayLights will burn 10 to 12 hours and are a perfect way to sample country scents in any room, with any style! These mighty candles are twice the size of a tea light and offer a deceptively large throw; the cover makes them a perfect travel companion too! Safe, reusable & recyclable.

*Candle products shown at actual size



Mini Jar

3.7oz - 20 to 30hrs
Dimensions: 2.3" x 3.4"



DayLight® Candle

1.5oz - Up to 10 to 12hrs
Dimensions: 2.25" x 1.3"

COUNTRY CANDLE™

The Original Kittredge Family Recipe



The Fragrances You Love - The Quality You Remember

www.countrycandle.com • 888-957-4645